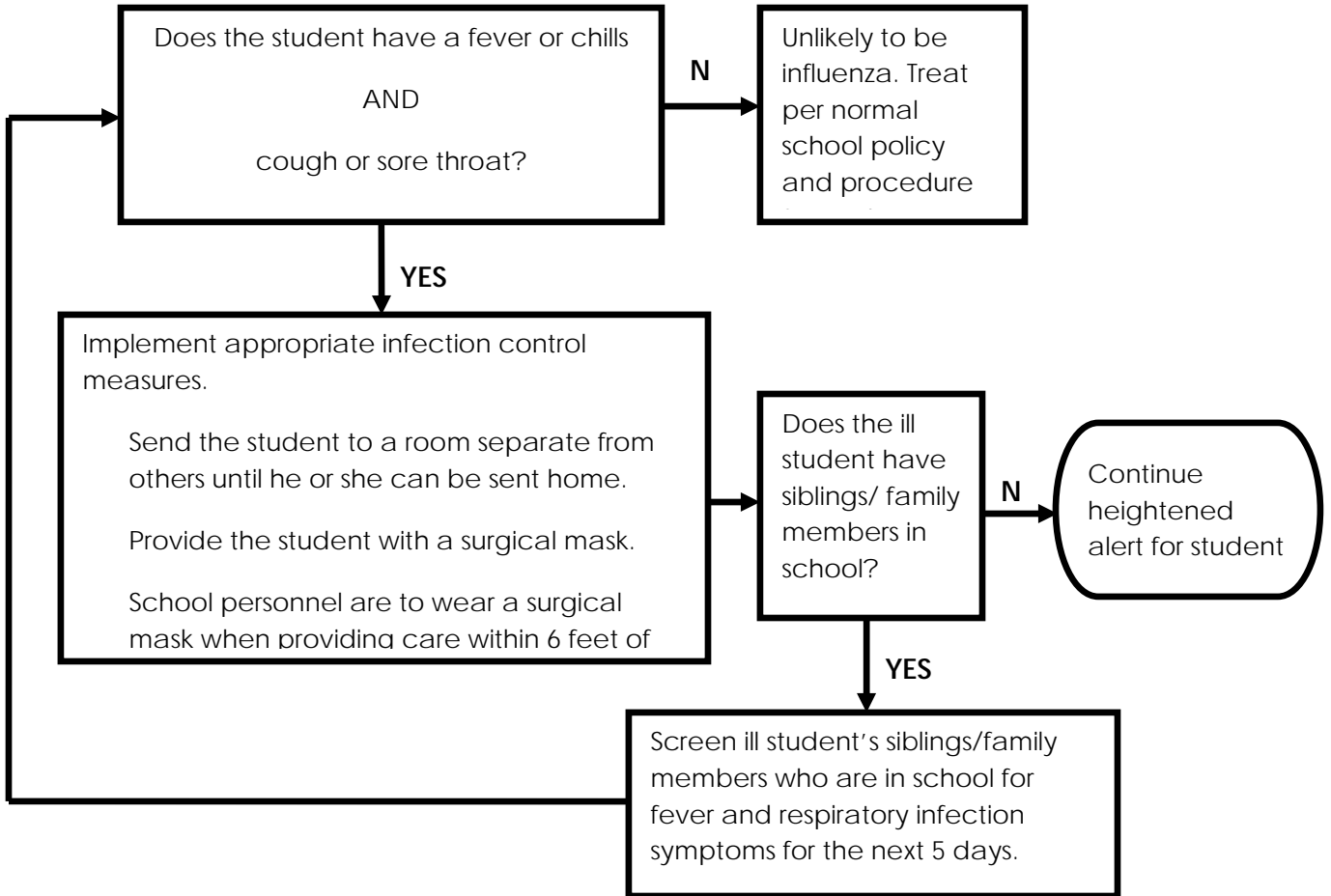


**ALGORITHM FOR SCHOOL RESPONSES TO STUDENT ILLNESS FOR THE 2009-2010 SCHOOL YEAR UNDER
CONDITIONS WITH SIMILAR SEVERITY AS IN SPRING 2009**



A fever is a temperature taken with a thermometer that is equal to or greater than 100 degrees Fahrenheit (38 degrees Celsius). If you are not able to measure a temperature, the sick person might have a fever if he or she

- feels warm
- has a flushed appearance, or
- is sweating or shivering.

Those with flu-like illness should stay home for at least 24 hours after they no longer have a fever, or signs of a fever, without the use of fever-reducing medicines. They should stay home even if they